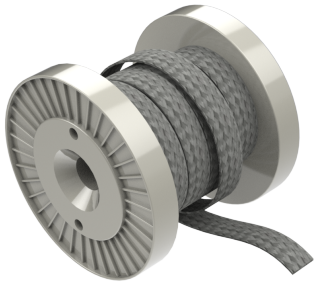


## Technical data sheet

5-P2O-0500-25m / FE 50mm<sup>2</sup> x 25m, V2A

(Status as of 19/05/2026)



### Design features

Dimensions (L / B / H) (mm)	25000 x 30 x 3.5
Cross section	50mm <sup>2</sup>
Weight (kg)	3,890
Part	earthing tape
Material	V2A

## Order designation

Designation	Order No.	Description	PU
FE 50mm <sup>2</sup> x 25m, V2A	5-P2O-0500-25m	Cross section 50mm <sup>2</sup> , width 30mm, thickness 3,5mm, material: stainless steel 304 (V2A 1.4301)	PU = reel 25m