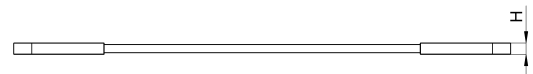
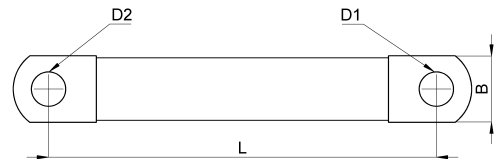
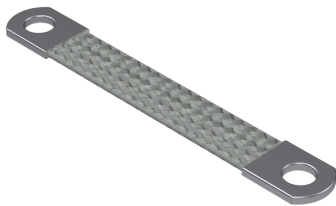


## Technical data sheet

5-KT10003000810C / FE 100/300/M8-M10, CU-SN

(Status as of 30/08/2025)



### Design features

Dimensions (L / B / H) (mm)	300 x 28 x 5.7
Cross section	100mm <sup>2</sup>
Single wire diameter (mm)	0.2
Mounting holes	M8 / M10
Weight (kg)	0,320
Part	earthing tape
Material	CU-SN
Mounting type	screw mounting

## Order designation

Designation	Order No.	Description	PU
FE 100/300/M8-M10, CU-SN	5-KT10003000810C	Earthing braid, Cross section 100mm <sup>2</sup> , hole one side M8 other side M10, length 300mm, seamless, rounded and pressed on contact sleeves, single wire diameter 0,2mm, material: tin-coated copper	PU = 10 pcs.