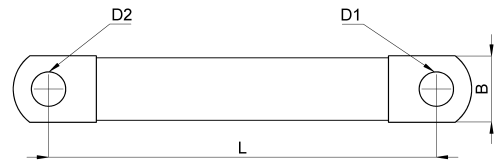
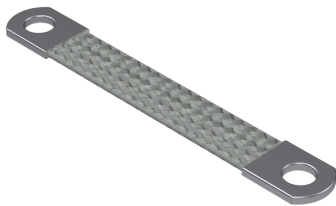


Technical data sheet

5-KT025011008C / FE 25/110/M8, CU-SN

(Status as of 05/02/2026)



Design features

Dimensions (L / B / H) (mm)	110 x 20.1 x 2.4
Cross section	25mm ²
Single wire diameter (mm)	0.2
Mounting holes	M8 / M8
Weight (kg)	0,034
Part	earthing tape
Material	CU-SN
Mounting type	screw mounting

Order designation

Designation	Order No.	Description	PU
FE 25/110/M8, CU-SN	5-KT025011008C	Earthing braid, Cross section 25mm ² , hole both side M8, length 110mm, seamless, rounded and pressed on contact sleeves, single wire diameter 0,2mm, material: tin-coated copper	PU = 10 pcs.