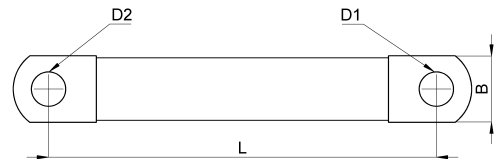
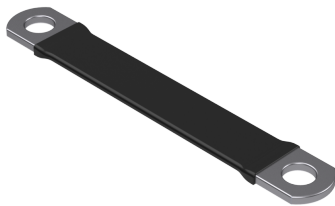


Technical data sheet

5-KT016050006swC / FE 16/500/M6, CU-SN, Isol.: sw

(Status as of 27/09/2025)



Design features

Dimensions (L / B / H) (mm)	500 x 16.2 x 2.5
Cross section	16mm ²
Single wire diameter (mm)	0.2
Mounting holes	M6 / M6
Weight (kg)	0,082
Part	earthing tape
Material	CU-SN
Material 2	polyolefin
Mounting type	screw mounting
Colour	black

Order designation

Designation	Order No.	Description	PU
FE 16/500/M6, CU-SN, Isol.: sw	5-KT016050006swC	Earthing braid, Cross section 16mm ² , hole both side M6, length 500mm, seamless, rounded and pressed on contact sleeves, single wire diameter 0,2mm, insulation: black shrinking tube, material: tin-coated copper	PU = 10 pcs.