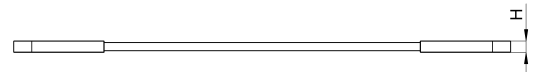
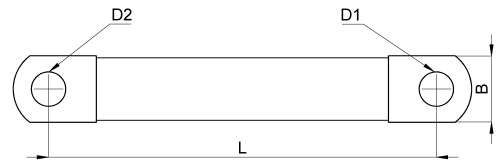
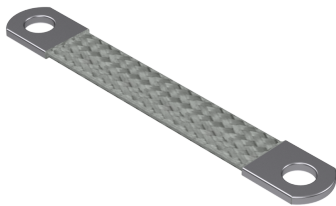


Technical data sheet

5-KT01002000608C / Flachbänderder

(Status as of 15/01/2024)



Design features

| | |
|-----------------------------|-------------------|
| Dimensions (L / B / H) (mm) | 200 x 14.1 x 1.5 |
| Cross section | 10mm ² |
| Single wire diameter (mm) | 0.2 |
| Mounting holes | M6 / M8 |
| Weight (kg) | 0,024 |
| Part | earthing tape |
| Material | tinned copper |
| Mounting type | screw mounting |

Order designation

| Designation | Order No. | Description | PU |
|----------------|------------------|---|--------------|
| Flachbänderder | 5-KT01002000608C | Cross section 10mm ² , hole one side M6 other side M8, length 200mm, seamless, rounded and pressed on contact sleeves, single wire diameter 0,2mm, material: tin-coated copper | PU = 10 pcs. |