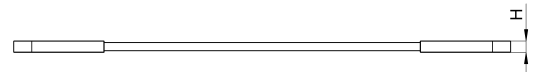
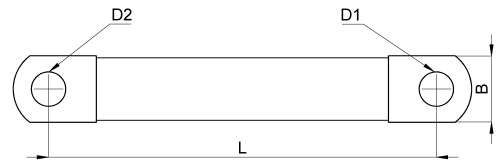
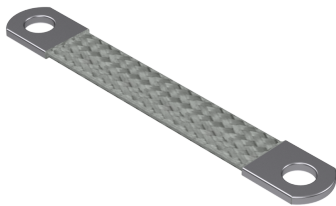


## Technical data sheet

5-KT006040006C / Flachbänderder

(Status as of 15/01/2024)



### Design features

|                             |                  |
|-----------------------------|------------------|
| Dimensions (L / B / H) (mm) | 400 x 12 x 1     |
| Cross section               | 6mm <sup>2</sup> |
| Single wire diameter (mm)   | 0.2              |
| Mounting holes              | M6 / M6          |
| Weight (kg)                 | 0,025            |
| Part                        | earthing tape    |
| Material                    | tinned copper    |
| Mounting type               | screw mounting   |

## Order designation

| Designation    | Order No.      | Description   | PU           |
|----------------|----------------|---|--------------|
| Flachbänderder | 5-KT006040006C | Cross section 6mm <sup>2</sup> , hole both side M6, length 400mm, seamless, rounded and pressed on contact sleeves, single wire diameter 0,2mm, material: tin-coated copper | PU = 10 pcs. |