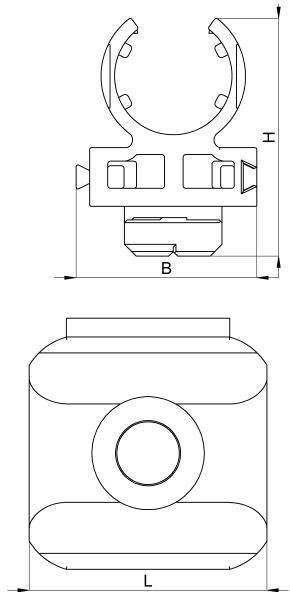


Technical data sheet

Mounting clip with clamping foot 3014-124C / SHK 12 C11

(Status as of 15/01/2024)



Design features

Dimensions (L / B / H) (mm)	19 x 20 x 26.3
Weight (kg)	0,003
Part	base
Material	PPO
Mounting type	C-rail
Colour	black

Order designation

Mounting clip with clamping foot			
Designation	Order No.	Description	PU
SHK 12 C11	3014-124C	M12-Mounting clip with clamping foot for C11-rails, material thickness 1,5mm, self-extinguishing according to UL94-V0	PU = 10 pcs.