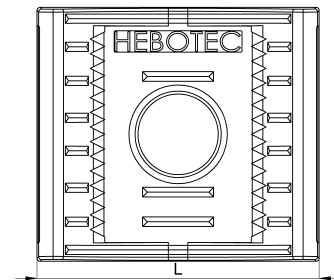
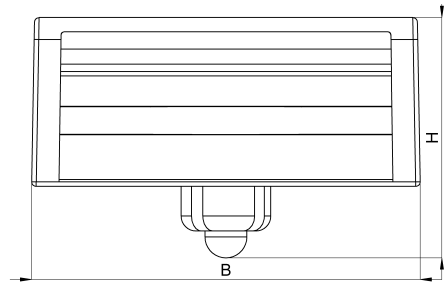
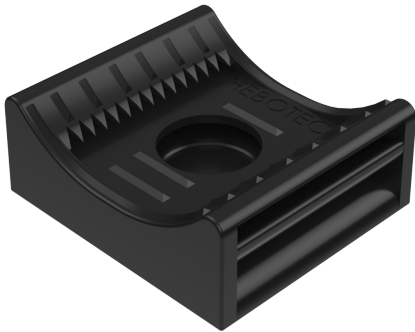


Technical data sheet

3011-574C / KBS-SN 8-35 20

(Status as of 15/01/2024)



Design features

Dimensions (L / B / H) (mm)	29 x 26 x 16.1
Clamping range (mm)	8 - 35
Tape width (E) (mm)	20
Weight (kg)	0,005
Part	base
Material	polyamide glass fiber reinforced
Mounting type	punch hole
Colour	black

Order designation

Designation	Order No.	Description	PU
KBS-SN 8-35 20	3011-574C	HEBOFIX base for direct assembly for hook-and-loop tape 20mm, clamping range 8 - 35mm, with expanding rivet for boring 5mm, according to UL94-V0	PU = 10 pcs.