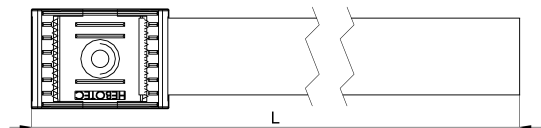
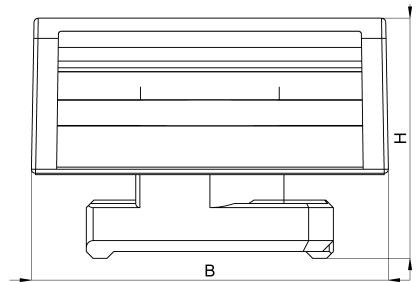
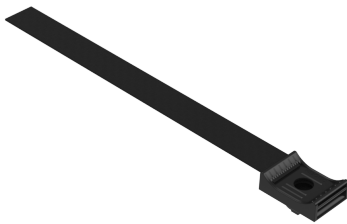


## Technical data sheet

3011-516-200C / KBS-C11 2,0 10-60 20

(Status as of 15/01/2024)



### Design features

Dimensions (L / B / H) (mm)	236 x 26 x 17.5
Clamping range (mm)	10 - 60
Tape width (E) (mm)	20
Weight (kg)	0,011
Part	base
Part 2	hook-and-loop tape
Material	polyamide glass fiber reinforced
Material 2	polypropylene and velours PA
Mounting type	C-rail
Colour	black

## Order designation

Designation	Order No.	Description	PU
KBS-C11 2,0 10-60 20	3011-516-200C	HEBOFIX base equipped with 200x20mm hook-and-loop tape, clamping foot for C-rails 11mm, material thickness 2,0mm, clamping range 10-60mm, according to UL94-V0	PU = 10 pcs.