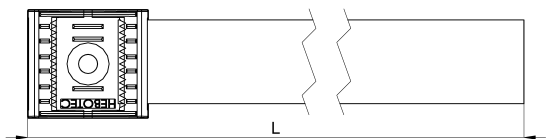
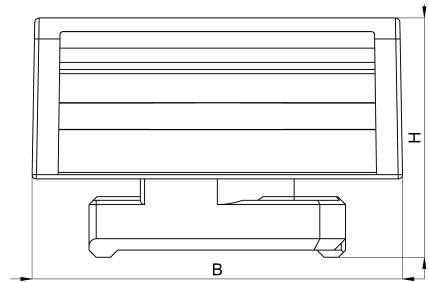


Technical data sheet

3011-504-180C / KBS-C11 1,5 8-35 20

(Status as of 15/01/2024)



Design features

Dimensions (L / B / H) (mm)	209 x 26 x 16.8
Clamping range (mm)	8 - 35
Tape width (E) (mm)	20
Weight (kg)	0,011
Part	base
Part 2	hook-and-loop tape
Material	polyamide glass fiber reinforced
Material 2	polypropylene and velours PA
Mounting type	C-rail
Colour	black

Order designation

Designation	Order No.	Description	PU
KBS-C11 1,5 8-35 20	3011-504-180C	HEBOFIX base equipped with 180x20mm hook-and-loop tape, clamping foot for C-rails 11mm, material thickness 1,5mm, clamping range 8-35mm, according to UL94-V0	PU = 10 pcs.