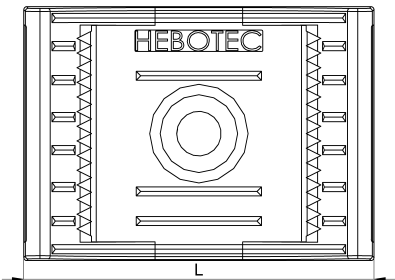
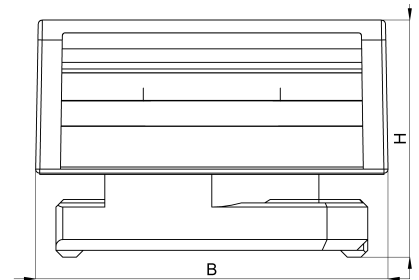


Technical data sheet

3011-286C / KBS-C16 2,0 10-60 20

(Status as of 15/01/2024)



Design features

Dimensions (L / B / H) (mm)	36 x 26 x 17
Clamping range (mm)	10 - 60
Tape width (E) (mm)	20
Weight (kg)	0,009
Part	base
Material	polyamide glass fiber reinforced
Mounting type	C-rail
Colour	black

Order designation

Designation	Order No.	Description	PU
KBS-C16 2,0 10-60 20	3011-286C	HEBOFIX base for hook-and-loop tape 20mm, clamping foot for C-rails 16mm, material thickness 2,0mm, clamping range 10-60mm, according to UL94-V0	PU = 10 pcs.