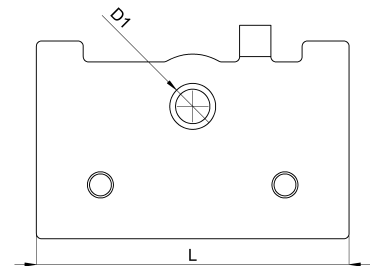
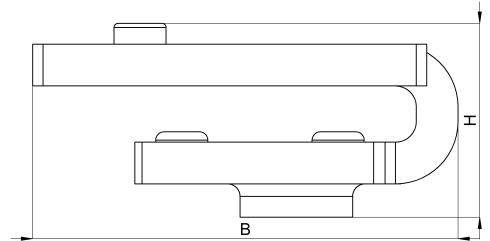
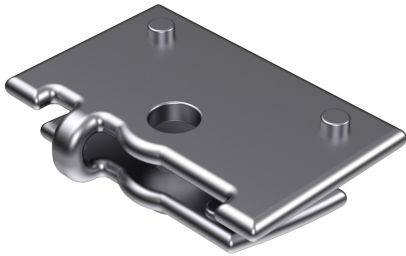


Technical data sheet

3011-208C / Montageadapter C16/4 HSKB 35

(Status as of 15/01/2024)



Design features

Dimensions (L / B / H) (mm)	30.1 x 20.4 x 9.3
Hole diameter D1 (mm)	4,3
Mounting hole 1	M4
Weight (kg)	0,013
Mounting type	C-rail

Order designation

Designation	Order No.	Description	PU
Montageadapter C16/4 HSKB 35	3011-208C	for C-rails 16mm, for shield clamp Big HSKB 35 - 65mm, M4, with twist-protection	PU = 10 pcs.