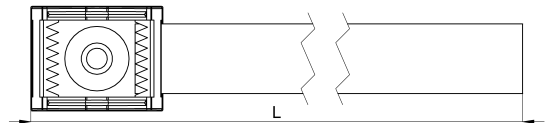
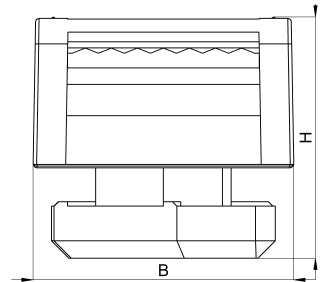
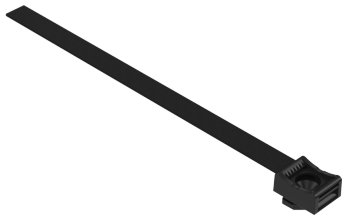


Technical data sheet

3011-172-150C / KBS-B8M 4-20 10

(Status as of 15/01/2024)



Design features

Dimensions (L / B / H) (mm)	168.6 x 15 x 13.8
Clamping range (mm)	4 - 20
Tape width (E) (mm)	10
Weight (kg)	0,003
Part	base
Part 2	hook-and-loop tape
Material	polyamide glass fiber reinforced
Material 2	polypropylene and velours PA
Mounting type	aluminium profile
Colour	black

Order designation

Designation	Order No.	Description	PU
KBS-B8M 4-20 10	3011-172-150C	HEBOFIX 45 base equipped with 150x10mm hook-and-loop tape, clamping foot for aluminium profile BOSCH 8mm, lamping range 4-20mm, according to UL94-V0	PU = 10 pcs.