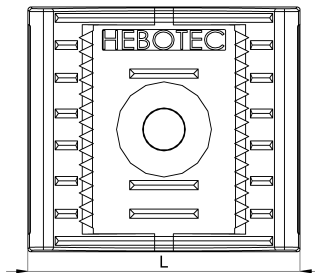
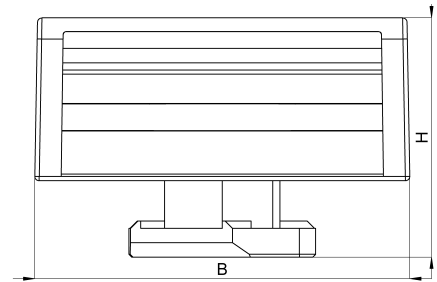


Technical data sheet

3011-154C / KBS-MA8M 8-35 20

(Status as of 15/01/2024)



Design features

Dimensions (L / B / H) (mm)	29 x 26 x 16.6
Clamping range (mm)	8 - 35
Tape width (E) (mm)	20
Weight (kg)	0,006
Part	base
Material	polyamide glass fiber reinforced
Mounting type	aluminium profile
Colour	black

Order designation

Designation	Order No.	Description	PU
KBS-MA8M 8-35 20	3011-154C	HEBOFIX 45 base with clamping foot for aluminium profile MayTec 8mm, clamping range 8-35mm, for hook-and-loop tape 20mm, according to UL94-V0	PU = 10 pcs.