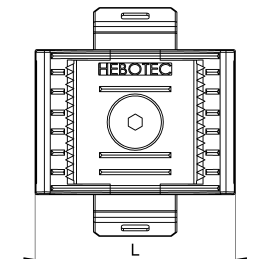
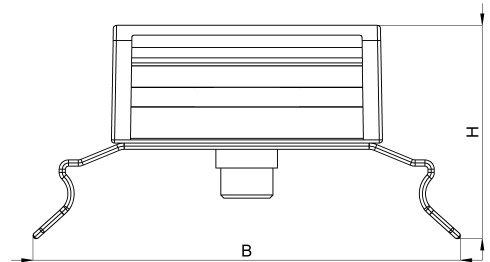


## Technical data sheet

3011-046C / KBS-H 10-60 20

(Status as of 15/01/2024)



### Design features

Dimensions (L / B / H) (mm)	36.1 x 41.1 x 21.3
Clamping range (mm)	10 - 60
Tape width (E) (mm)	20
Weight (kg)	0,011
Part	base
Part 2	clip foot
Material	polyamide glass fiber reinforced
Material 2	galvanized spring steel
Mounting type	DIN rail

## Order designation

Designation	Order No.	Description	PU
KBS-H 10-60 20	3011-046C	HEBOFIX base for 35mm-DIN rails, clamping range 10 - 60mm, for hook-and-loop tape 20mm, according to UL94-V0	PU = 10 pcs.