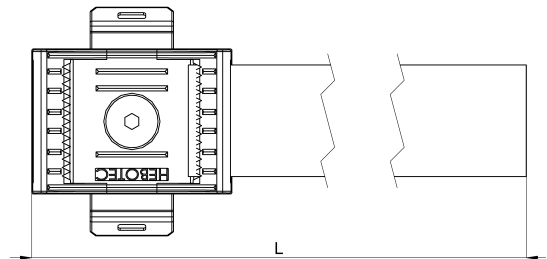
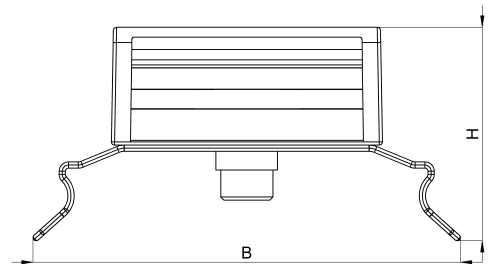


Technical data sheet

3011-046-200C / KBS-H 10-60 20

(Status as of 15/01/2024)



Design features

Dimensions (L / B / H) (mm)	236.1 x 41.1 x 21.3
Clamping range (mm)	10 - 60
Tape width (E) (mm)	20
Weight (kg)	0,011
Part	base
Part 2	hook-and-loop tape
Part 3	clip foot
Material	polyamide glass fiber reinforced
Material 2	polypropylene and velours PA
Material 3	galvanized spring steel

Mounting type

DIN rail

Order designation

Designation	Order No.	Description	PU
KBS-H 10-60 20	3011-046-200C	HEBOFIX base for 35mm-DIN rails, clamping range 10 - 60mm, equipped with 200x20mm hook-and-loop tape, according to UL94-V0	PU = 10 pcs.