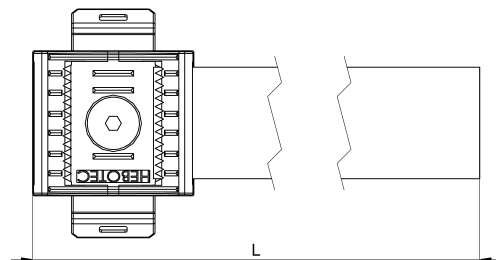
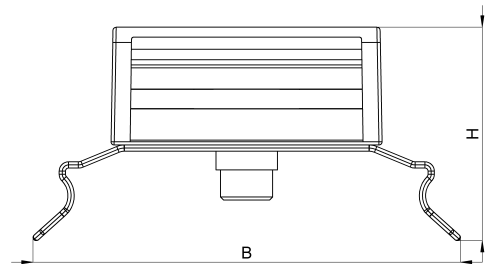


Technical data sheet

3011-044-180C / KBS-H 8-35 20

(Status as of 15/01/2024)



Design features

Dimensions (L / B / H) (mm)	209.1 x 41.1 x 20.5
Clamping range (mm)	8 - 35
Tape width (E) (mm)	20
Weight (kg)	0,010
Part	base
Part 2	hook-and-loop tape
Part 3	clip foot
Material	polyamide glass fiber reinforced
Material 2	polypropylene and velours PA
Material 3	galvanized spring steel

Mounting type

DIN rail

Order designation

Designation	Order No.	Description	PU
KBS-H 8-35 20	3011-044-180C	HEBOFIX base for 35mm-DIN-rails, clamping range 8 - 35mm, equipped with 180x20mm hook-and-loop tape, according to UL94-V0	PU = 10 pcs.