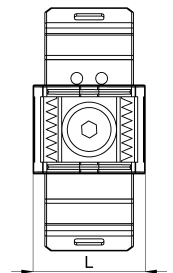
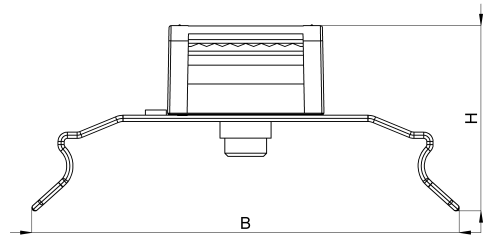


Technical data sheet

HEBOFIX hook and loop base 3011-042C / KBS-H 4-20 10

(Status as of 15/01/2024)



Design features

Dimensions (L / B / H) (mm)	18.9 x 51.1 x 13.7
Clamping range (mm)	4 - 20
Tape width (E) (mm)	10
Weight (kg)	0,007
Part	base
Part 2	clip foot
Material	polyamide glass fiber reinforced
Material 2	galvanized spring steel
Mounting type	DIN rail

Order designation

HEBOFIX hook and loop base			
Designation	Order No.	Description	PU
KBS-H 4-20 10	3011-042C	HEBOFIX base for 35mm-DIN-rails, clamping range 4 - 20mm, for hook-and-loop tape 7,5mm and 10mm, according to UL-94-V0	PU = 10 pcs.