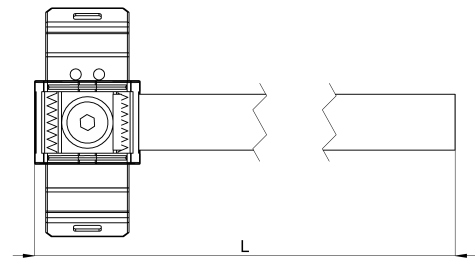
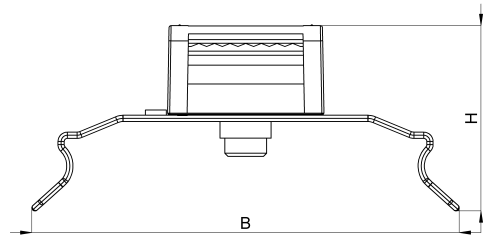


## Technical data sheet

3011-042-150C / KBS-H 4-20 10

(Status as of 15/01/2024)



### Design features

Dimensions (L / B / H) (mm)	168.6 x 41.1 x 17.8
Clamping range (mm)	4 - 20
Tape width (E) (mm)	10
Weight (kg)	0,007
Part	base
Part 2	hook-and-loop tape
Part 3	clip foot
Material	polyamide glass fiber reinforced
Material 2	polypropylene and velours PA
Material 3	galvanized spring steel

Mounting type

DIN rail

## Order designation

Designation	Order No.	Description	PU
KBS-H 4-20 10	3011-042-150C	HEBOFIX base for 35mm-DIN-rails, clamping range 4 - 20mm, equipped with 150x10mm hook-and-loop tape, according to UL-94-V0	PU = 10 pcs.