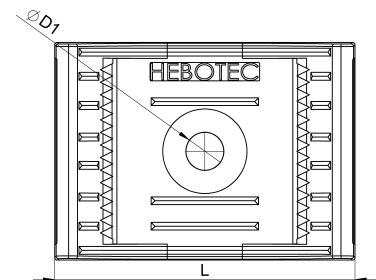
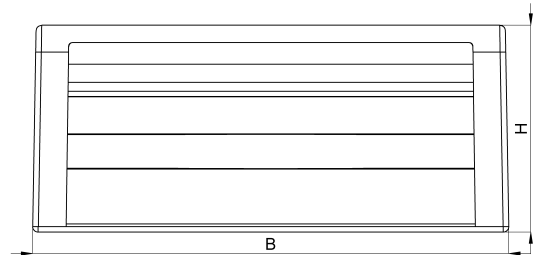
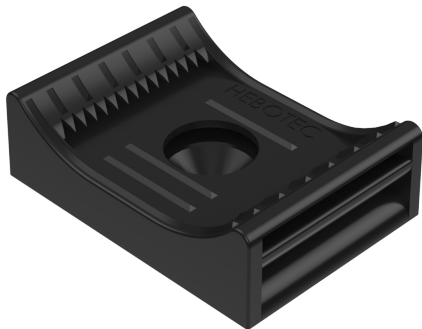


Technical data sheet

3011-006C / KBS 10-60 20

(Status as of 15/01/2024)



Design features

Dimensions (L / B / H) (mm)	36 x 26 x 11.3
Clamping range (mm)	10 - 60
Tape width (E) (mm)	20
Hole diameter D1 (mm)	4.3
Mounting hole 1	M4
Weight (kg)	0,006
Part	base
Material	polyamide glass fiber reinforced
Mounting type	screw mounting
Colour	black

Order designation

Designation	Order No.	Description	PU
KBS 10-60 20	3011-006C	HEBOFIX base for direct assembly, clamping range 10 - 60mm, for hook-and-loop tape 20mm, M4 and M5, according to UL94-V0	PU = 10 pcs.