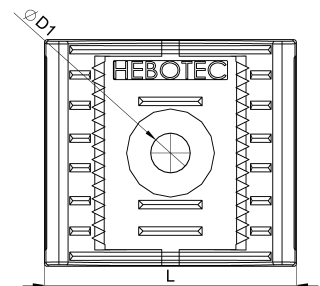
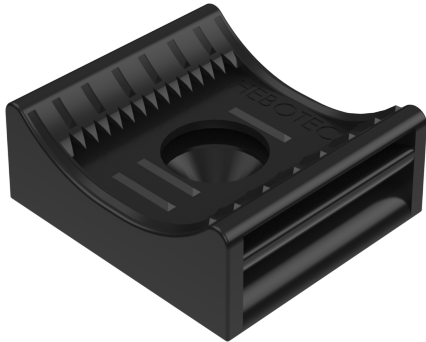


## Technical data sheet

3011-004C / KBS 8-35 20

(Status as of 15/01/2024)



### Design features

Dimensions (L / B / H) (mm)	29 x 26 x 11.3
Clamping range (mm)	8 - 35
Tape width (E) (mm)	20
Hole diameter D1 (mm)	4.3
Mounting hole 1	M4
Weight (kg)	0,005
Part	base
Material	polyamide glass fiber reinforced
Mounting type	screw mounting
Colour	black

## Order designation

Designation	Order No.	Description	PU
KBS 8-35 20	3011-004C	HEBOFIX base for direct assembly, clamping range 8 - 35mm, for hook-and-loop tape 20mm, M4 and M5, according to UL94-V0	PU = 10 pcs.