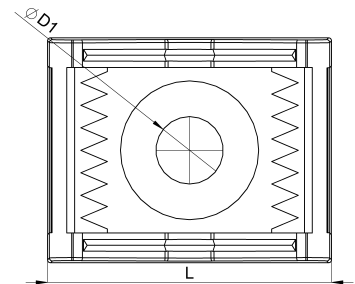
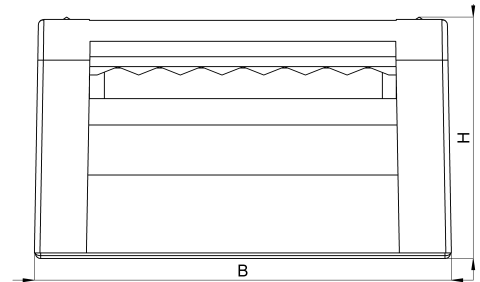


## Technical data sheet

3011-002C / KBS 4-20 10

(Status as of 15/01/2024)



### Design features

Dimensions (L / B / H) (mm)	18.6 x 15 x 8.6
Clamping range (mm)	4 - 20
Tape width (E) (mm)	10
Hole diameter D1 (mm)	4.3
Mounting hole 1	M4
Weight (kg)	0,002
Part	base
Material	polyamide glass fiber reinforced
Mounting type	screw mounting
Colour	black

## Order designation

Designation	Order No.	Description	PU
KBS 4-20 10	3011-002C	HEBOFIX base for direct assembly, clamping range 4 - 20mm, for hook-and-loop tape 7,5mm and 10mm, M4, according to UL94-V0	PU = 10 pcs.