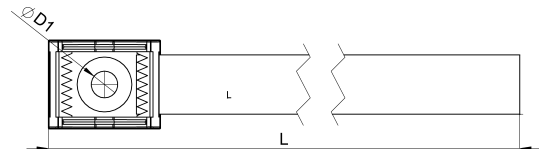
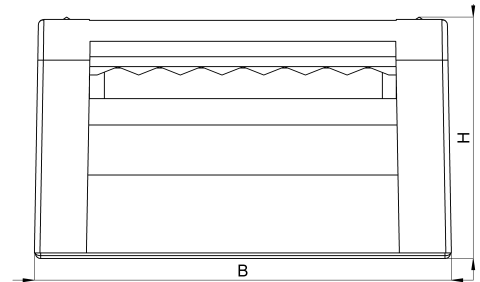
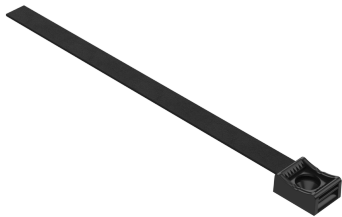


Technical data sheet

3011-002-150C / KBS-KE 4-20 10

(Status as of 15/01/2024)



Design features

| | |
|-----------------------------|----------------------------------|
| Dimensions (L / B / H) (mm) | 168.6 x 15 x 8.6 |
| Clamping range (mm) | 4 - 20 |
| Tape width (E) (mm) | 10 |
| Hole diameter D1 (mm) | 4.3 |
| Mounting hole 1 | M4 |
| Weight (kg) | 0,003 |
| Part | base |
| Part 2 | hook-and-loop tape |
| Material | polyamide glass fiber reinforced |
| Material 2 | polypropylene and velours PA |

| | |
|---------------|----------------|
| Mounting type | screw mounting |
| Colour | black |

Order designation

| Designation | Order No. | Description | PU |
|----------------|---------------|--|--------------|
| KBS-KE 4-20 10 | 3011-002-150C | HEBOFIX base for direct assembly, clamping range 4 - 20mm, equipped with 150x10mm hook-and-loop tape, M4, according to UL94-V0 | PU = 10 pcs. |