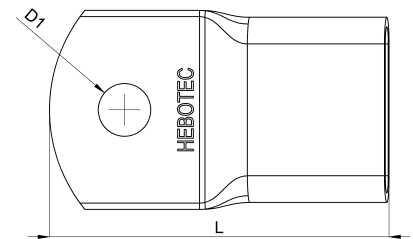
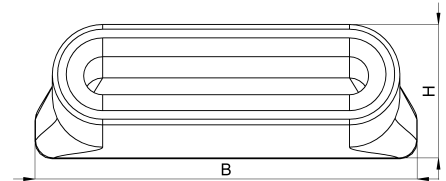


## Technical data sheet

2040-063C / HPK 25/35 - 10

(Status as of 15/01/2024)



### Design features

Dimensions (L / B / H) (mm)	54.3 x 31.7 x 11.1
Cross section	25.35mm <sup>2</sup>
Hole diameter D1 (mm)	10,4
Mounting hole 1	M10
Weight (kg)	0,068
Part	cable lug
Material	tinned copper
Mounting type	screw mounting

## Order designation

Designation	Order No.	Description	PU
HPK 25/35 - 10	2040-063C	HEBOPRESS cable lug for earthing tape, 25/35mm <sup>2</sup> , M10	PU = 10 pcs.