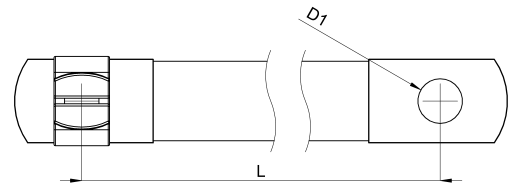
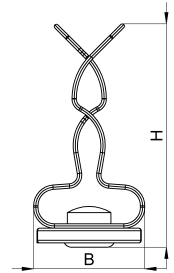
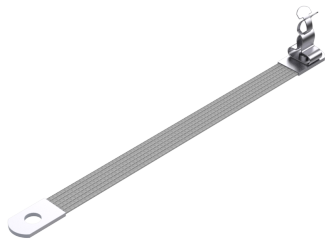


## Technical data sheet

1080-102C / HSKM 3-12 FE 06 150 06

(Status as of 26/04/2024)



### Design features

Dimensions (L / B / H) (mm)	150 x 12.8 x 25.6
Shield diameter min/max (mm)	3 / 12
Cross section	6mm <sup>2</sup>
Hole diameter D1 (mm)	6,5
Mounting hole 1	M6
Weight (kg)	0,011
Part	shield clamp
Part 2	earthing tape
Material	galvanized spring steel
Material 2	tinned copper

Mounting type

screw mounting

## Order designation

Designation	Order No.	Description	PU
HSKM 3-12 FE 06 150 06	1080-102C	Shield clamp Multi, clamping range 3 - 12mm, with earthing tape cross section 6mm <sup>2</sup> , length 150mm, hole M6, single wire diameter 0,2mm, material: tin-coated copper	PU = 10 pcs.