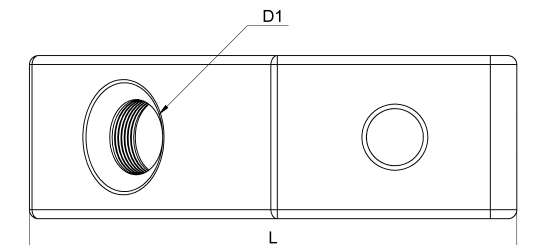
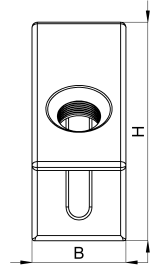
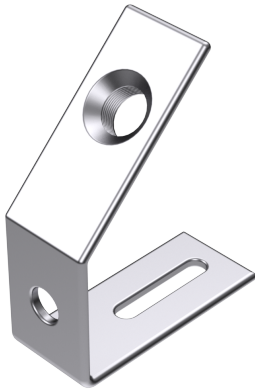


Technical data sheet

1046-031C / MSC-53

(Status as of 15/01/2024)



Design features

Dimensions (L / B / H) (mm)	54 x 18 x 42
Hole diameter D1 (mm)	6,3
Mounting hole 1	M6
Weight (kg)	0,030
Part	mounting bracket
Material	galvanized steel
Mounting type	screw mounting

Order designation

Designation	Order No.	Description	PU
MSC-53	1046-031C	Mounting bracket 40 x 18 x 53 mm	PU = 10 pcs.