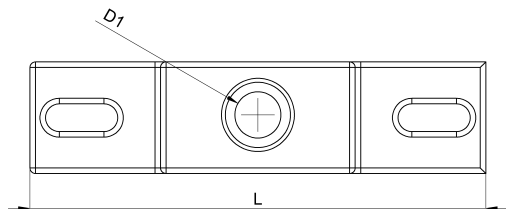
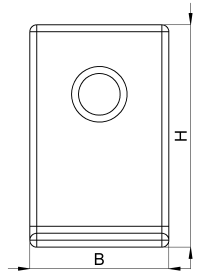


## Technical data sheet

1046-021C / MSB-30

(Status as of 15/01/2024)



### Design features

Dimensions (L / B / H) (mm)	82 x 20 x 32
Hole diameter D1 (mm)	6,3
Mounting hole 1	M6
Weight (kg)	0,038
Part	mounting bracket
Material	galvanized steel
Mounting type	screw mounting

## Order designation

Designation	Order No.	Description	PU
MSB-30	1046-021C	Mounting bracket 80 x 20 x 30 mm	PU = 10 pcs.