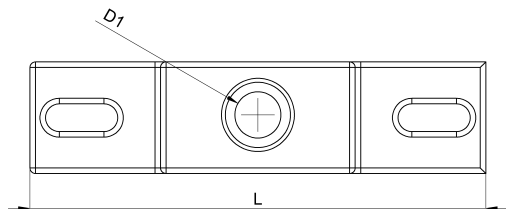
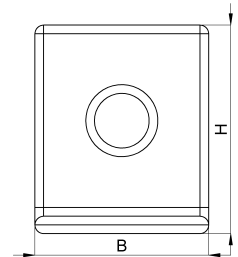
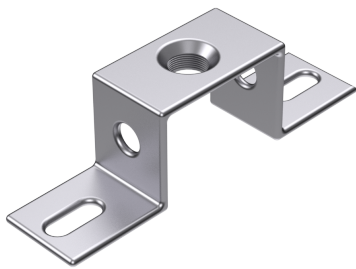


Technical data sheet

1046-020C / MSB-20

(Status as of 15/01/2024)



Design features

Dimensions (L / B / H) (mm)	82 x 20 x 24
Hole diameter D1 (mm)	8,3
Mounting hole 1	M8
Weight (kg)	0,032
Part	mounting bracket
Material	galvanized steel
Mounting type	screw mounting

Order designation

Designation	Order No.	Description	PU
MSB-20	1046-020C	Mounting bracket 80 x 20 x 20 mm	PU = 10 pcs.