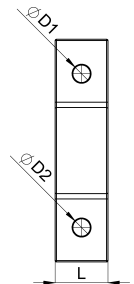
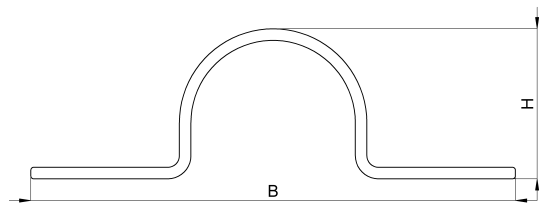


Technical data sheet

1044-037F / ESD 28,5

(Status as of 26/06/2024)



Design features

Dimensions (L / B / H) (mm)	20 x 84 x 26
Shield diameter min/max (mm)	26 / 28.5
Hole diameter (D1 / D2) (mm)	6.6, 6.6
Mounting holes	M6 / M6
Weight (kg)	0,033
Part	mounting bracket
Material	galvanized steel
Mounting type	screw mounting

Order designation

Designation	Order No.	Description	PU
ESD 28,5	1044-037F	Earthing clamp with 2 lugs, clamping range 26.0 - 28.5mm, galvanised steel	PU = 100 pcs.