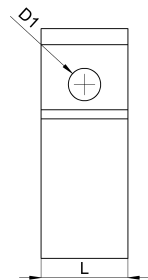
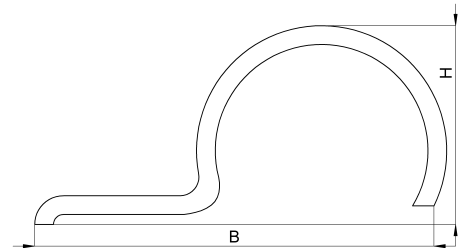
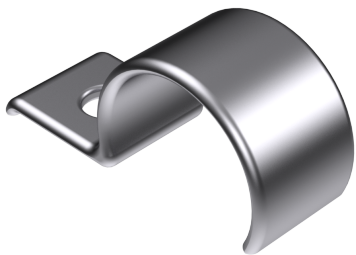


Technical data sheet

1044-018F / ESE 31

(Status as of 26/06/2024)



Design features

Dimensions (L / B / H) (mm)	25.1 x 63.8 x 31.8
Shield diameter min/max (mm)	28.5 / 31
Hole diameter D1 (mm)	9,3
Mounting hole 1	M8
Weight (kg)	0,054
Part	mounting bracket
Material	galvanized steel
Mounting type	screw mounting

Order designation

Designation	Order No.	Description	PU
ESE 31	1044-018F	Earthing clamp with 1 lug, clamping range 28.5 - 31.0mm, galvanised steel	PU = 100 pcs.