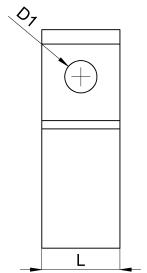
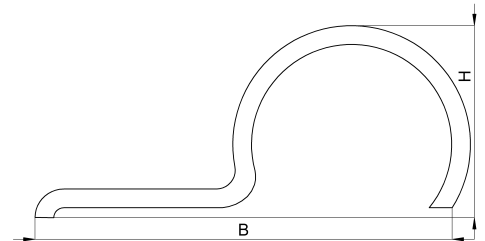


## Technical data sheet

1044-017F / ESE 28,5

(Status as of 26/06/2024)



### Design features

Dimensions (L / B / H) (mm)	25.1 x 66.7 x 30.7
Shield diameter min/max (mm)	26 / 28.5
Hole diameter D1 (mm)	9,3
Mounting hole 1	M8
Weight (kg)	0,050
Part	mounting bracket
Material	galvanized steel
Mounting type	screw mounting

## Order designation

Designation	Order No.	Description	PU
ESE 28,5	1044-017F	Earthing clamp with 1 lug, clamping range 26.0 - 28.5mm, galvanised steel	PU = 100 pcs.