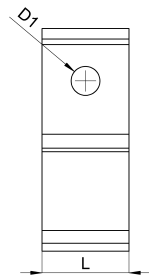
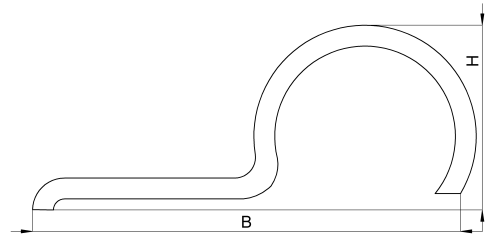


Technical data sheet

1044-016F / ESE 26

(Status as of 26/06/2024)



Design features

Dimensions (L / B / H) (mm)	25.1 x 61.6 x 26.6
Shield diameter min/max (mm)	23 / 26
Hole diameter D1 (mm)	9,3
Mounting hole 1	M8
Weight (kg)	0,046
Part	mounting bracket
Material	galvanized steel
Mounting type	screw mounting

Order designation

Designation	Order No.	Description	PU
ESE 26	1044-016F	Earthing clamp with 1 lug, clamping range 23.0 - 26.0mm, galvanised steel	PU = 100 pcs.