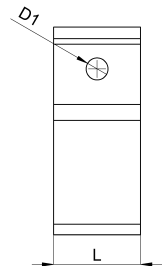
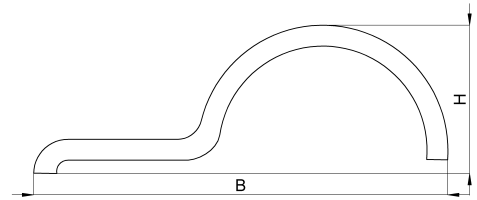


Technical data sheet

1044-015F / ESE 23

(Status as of 26/06/2024)



Design features

Dimensions (L / B / H) (mm)	59.6 x 25.1 x 21.3
Shield diameter min/max (mm)	20 / 23
Hole diameter D1 (mm)	6,3
Mounting hole 1	M8
Weight (kg)	0,043
Part	mounting bracket
Material	galvanized steel
Mounting type	screw mounting

Order designation

Designation	Order No.	Description	PU
ESE 23	1044-015F	Earthing clamp with 1 lug, clamping range 20.0 - 23.0mm, galvanised steel	PU = 100 pcs.