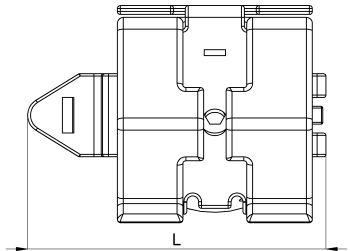
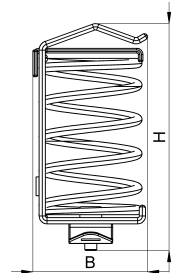
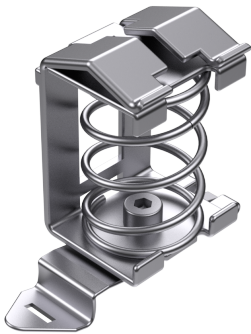


Technical data sheet

1042-003C / SF-SK 10-20

(Status as of 15/01/2024)



Design features

Dimensions (L / B / H) (mm)	50.5 x 36.6 x 72.5
Shield diameter min/max (mm)	10 / 20
Weight (kg)	0,043
Mounting type	DIN rail

Order designation

Designation	Order No.	Description	PU
SF-SK 10-20	1042-003C	Shield clamp with spring on clip foot, shield diameter 10-20mm	PU = 10 pcs.