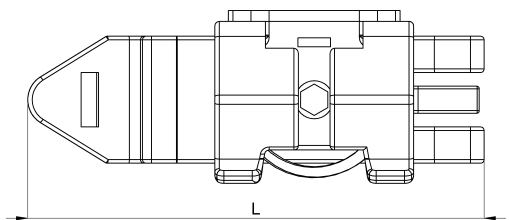
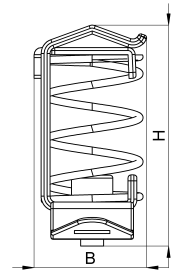
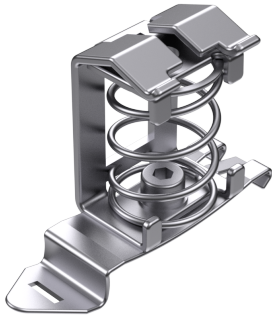


Technical data sheet

1042-002C / SF-SK 4-13,5

(Status as of 15/01/2024)



Design features

Dimensions (L / B / H) (mm)	50.6 x 19.1 x 37.4
Shield diameter min/max (mm)	4 / 13.5
Weight (kg)	0,025
Mounting type	DIN rail

Order designation

Designation	Order No.	Description	PU
SF-SK 4-13,5	1042-002C	Shield clamp with spring on clip foot, shield diameter 4 - 13,5 mm	PU = 10 pcs.