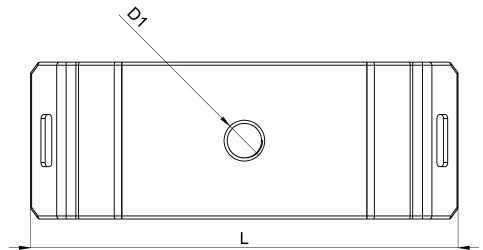
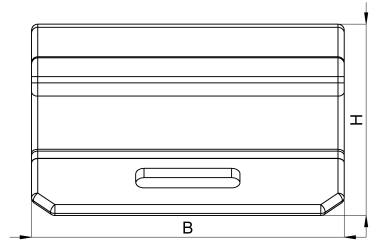


## Technical data sheet

1030-544D / HSF 15 M4

(Status as of 15/01/2024)



### Design features

Dimensions (L / B / H) (mm)	41.2 x 15.1 x 9.3
Hole diameter D1 (mm)	4,3
Weight (kg)	0,004
Part	clip foot
Material	galvanized spring steel
Mounting type	DIN rail

## Order designation

Designation	Order No.	Description	PU
HSF 15 M4	1030-544D	Clip foot Multi, new contour, for mounting onto 35mm DIN rails, 15mm width, with M4 thread	PU = 25 pcs.