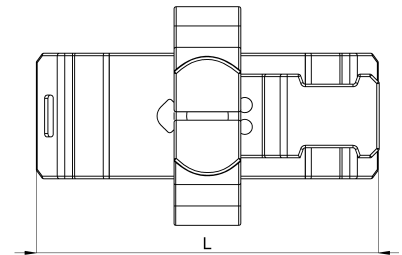
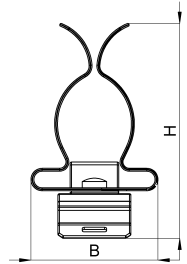


Technical data sheet

1030-306C / SKHHZ 17 - 30

(Status as of 15/01/2024)



Design features

Dimensions (L / B / H) (mm)	41.1 x 26.1 x 44.1
Shield diameter min/max (mm)	17 / 30
Strain relief	Yes
Weight (kg)	0,009
Part	Shield clamp
Part 2	clip foot
Material	galvanized spring steel
Material 2	galvanized spring steel
Mounting type	DIN rail

Order designation

Designation	Order No.	Description	PU
SKHHZ 17 - 30	1030-306C	Shield clamp on clip foot, for mounting onto 35mm DIN rails, clamping range 17 - 30mm, with strain relief	PU = 10 pcs.