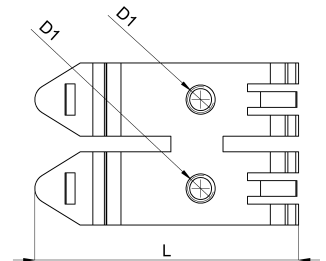
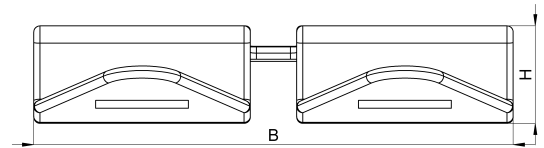


Technical data sheet

1030-026D / Schnappfuß doppelt M5

(Status as of 15/01/2024)



Design features

Dimensions (L / B / H) (mm)	51.1 x 31.1 x 6.3
Hole diameter (D1 / D2) (mm)	5,2, 5,2
Mounting holes	M5 / M5
Weight (kg)	0,009
Part	clip foot
Material	steel nickeled
Mounting type	DIN rail

Order designation

Designation	Order No.	Description	PU
Schnappfuß doppelt M5	1030-026D	with thread boring for M5, for mounting onto 35mm DIN rails	PU = 25 pcs.