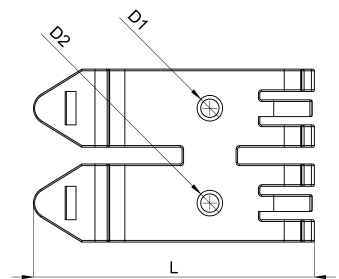
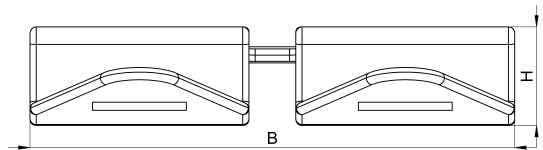


Technical data sheet

1030-025D / Schnappfuß doppelt M4

(Status as of 15/01/2024)



Design features

Dimensions (L / B / H) (mm)	50.6 x 31.1 x 6.3
Hole diameter (D1 / D2) (mm)	4,2, 4,2
Mounting holes	M4 / M4
Weight (kg)	0,009
Part	clip foot
Material	steel nickeled
Mounting type	DIN rail

Order designation

Designation	Order No.	Description	PU
Schnappfuß doppelt M4	1030-025D	with tread boring for M4, for mounting onto 35mm DIN rails	PU = 25 pcs.