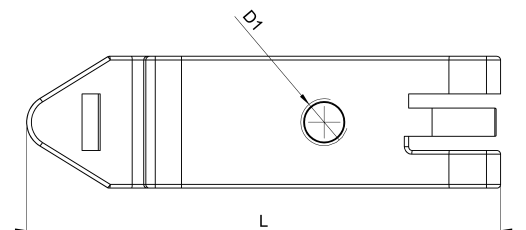
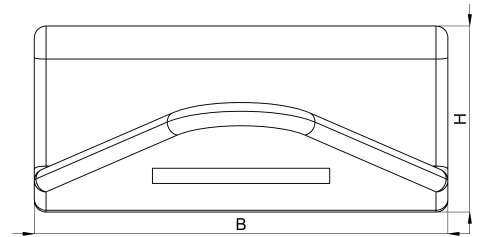


Technical data sheet

1030-022D / Schnappfuß M5 mit Gewinde

(Status as of 15/01/2024)



Design features

Dimensions (L / B / H) (mm)	50.9 x 14.1 x 6.3
Hole diameter D1 (mm)	4,2
Weight (kg)	0,004
Part	clip foot
Material	steel nickeled
Mounting type	DIN rail

Order designation

Designation	Order No.	Description	PU
Schnappfuß M5 mit Gewinde	1030-022D	with M5- thread for mounting onto 35mm DIN rails	PU = 25 pcs.