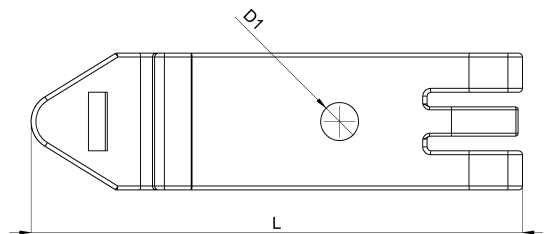
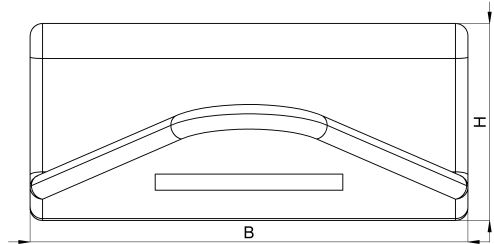


Technical data sheet

1030-021D / Schnappfuß 4

(Status as of 15/01/2024)



Design features

Dimensions (L / B / H) (mm)	50.9 x 14.1 x 6.3
Hole diameter D1 (mm)	3,9
Weight (kg)	0,005
Part	clip foot
Material	steel nickeled
Mounting type	DIN rail

Order designation

Designation	Order No.	Description	PU
Schnappfuß 4	1030-021D	with boring 3.9 mm, for mounting onto 35mm DIN rails	PU = 25 pcs.