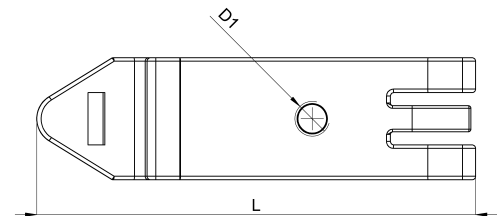
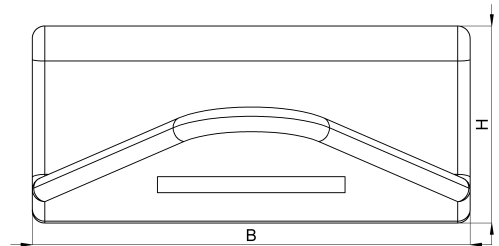


Technical data sheet

Mounting clip 1030-020D / Schnappfuß M4 mit Gewinde

(Status as of 15/01/2024)



Design features

Dimensions (L / B / H) (mm)	50.9 x 14.1 x 6.3
Hole diameter D1 (mm)	4,3
Weight (kg)	0,004
Part	clip foot
Material	steel nickeled
Mounting type	DIN rail

Order designation

Mounting clip			
Designation	Order No.	Description	PU
Schnappfuß M4 mit Gewinde	1030-020D	with M4 thread for mounting onto 35mm DIN rails	PU = 25 pcs.