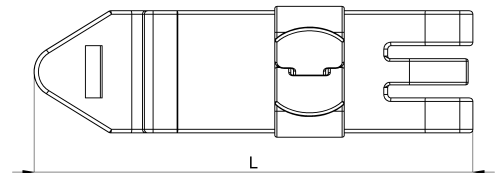
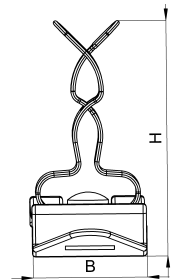


Technical data sheet

1030-011C / SKH 3 - 12

(Status as of 15/01/2024)



Design features

Dimensions (L / B / H) (mm)	50.9 x 14.1 x 28.9
Shield diameter min/max (mm)	3 / 12
Weight (kg)	0,006
Part	shield clamp
Part 2	clip foot
Material	galvanized spring steel
Material 2	steel nickeled
Mounting type	DIN rail

Order designation

Designation	Order No.	Description	PU
SKH 3 - 12	1030-011C	Shield clamp on clip foot for mounting onto 35mm DIN rails clamping range 3 - 12 mm	PU = 10 pcs.