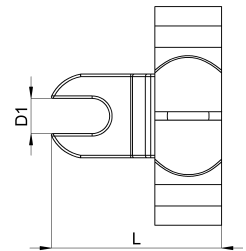
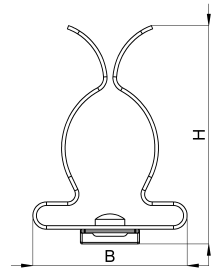


Technical data sheet

1022-516C / SKDL 17 - 30

(Status as of 15/01/2024)



Design features

Dimensions (L / B / H) (mm)	20.4 x 26.1 x 37.1
Shield diameter min/max (mm)	17 / 30
Hole diameter D1 (mm)	4.2
Mounting hole 1	M4
Weight (kg)	0,006
Part	shield clamp
Material	galvanized spring steel
Mounting type	screw mounting

Order designation

Designation	Order No.	Description	PU
SKDL 17 - 30	1022-516C	Shield clamp with open slotted hole on direct support with boring for M4, shield diameter 17-30mm	PU = 10 pcs.