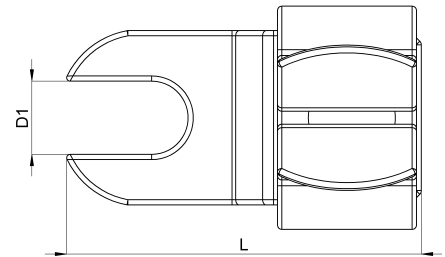
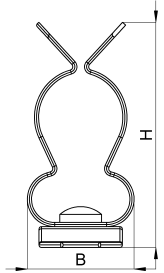


## Technical data sheet

1022-505C / SKDL 11 - 16

(Status as of 15/01/2024)



### Design features

Dimensions (L / B / H) (mm)	20.8 x 12.8 x 27.1
Shield diameter min/max (mm)	11 / 16
Hole diameter D1 (mm)	4.2
Mounting hole 1	M4
Weight (kg)	0,004
Part	shield clamp
Material	galvanized spring steel
Mounting type	screw mounting

## Order designation

Designation	Order No.	Description	PU
SKDL 11 - 16	1022-505C	Shield clamp with open slotted hole on direct support with boring for M4, shield diameter 11 - 16 mm	PU = 10 pcs.