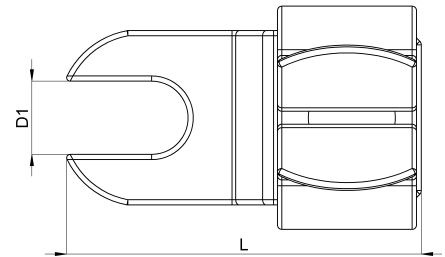
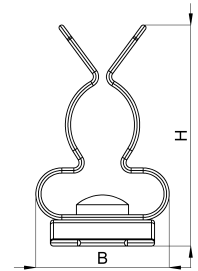


Technical data sheet

1022-503C / SKDL 6 - 8

(Status as of 15/01/2024)



Design features

Dimensions (L / B / H) (mm)	20.8 x 12.8 x 21.2
Shield diameter min/max (mm)	6 / 8
Hole diameter D1 (mm)	4.3
Mounting hole 1	M4
Weight (kg)	0,004
Part	shield clamp
Material	galvanized spring steel
Mounting type	screw mounting

Order designation

Designation	Order No.	Description	PU
SKDL 6 - 8	1022-503C	Shield clamp with open slotted hole on direct support with boring for M4, shield diameter 6 - 8 mm	PU = 10 pcs.