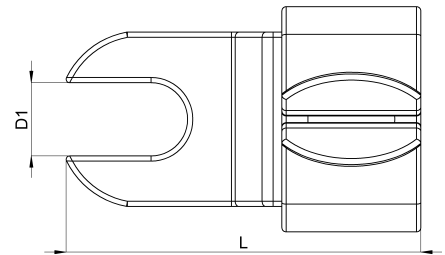
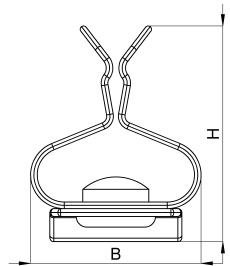


Technical data sheet

1022-501C / SKDL 1,5 - 3

(Status as of 15/01/2024)



Design features

Dimensions (L / B / H) (mm)	20.4 x 12.9 x 16.3
Shield diameter min/max (mm)	1.5 / 3
Hole diameter D1 (mm)	4.2
Mounting hole 1	M4
Weight (kg)	0,004
Part	shield clamp
Material	galvanized spring steel
Mounting type	screw mounting

Order designation

Designation	Order No.	Description	PU
SKDL 1,5 - 3	1022-501C	Shield clamp with open slotted hole on direct support with boring for M4, shield diameter 1,5 - 3 mm	PU = 10 pcs.