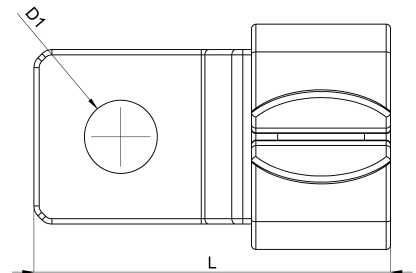
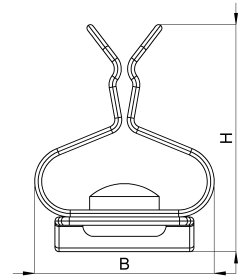


Technical data sheet

1022-321C / SKD 5 1,5 - 3

(Status as of 15/01/2024)



Design features

Dimensions (L / B / H) (mm)	20.5 x 12.9 x 16.4
Shield diameter min/max (mm)	1.5 / 3
Hole diameter D1 (mm)	5.2
Mounting hole 1	M5
Weight (kg)	0,004
Part	shield clamp
Material	galvanized spring steel
Mounting type	screw mounting

Order designation

Designation	Order No.	Description	PU
SKD 5 1,5 - 3	1022-321C	Shield clamp for direct assembly, boring for M5, shield diameter 1,5 - 3mm	PU = 10 pcs.