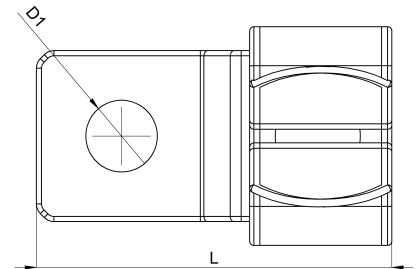
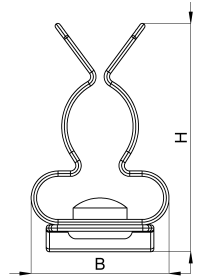


## Technical data sheet

1022-303C / SKD 4 6 - 8

(Status as of 15/01/2024)



### Design features

Dimensions (L / B / H) (mm)	20.5 x 12.8 x 21.3
Shield diameter min/max (mm)	6 / 8
Hole diameter D1 (mm)	4.3
Mounting hole 1	M4
Weight (kg)	0,003
Part	shield clamp
Material	galvanized spring steel
Mounting type	screw mounting

## Order designation

Designation	Order No.	Description	PU
SKD 4 6 - 8	1022-303C	Shield clamp for direct assembly, boring for M4, shield diameter 6-8mm	PU = 10 pcs.