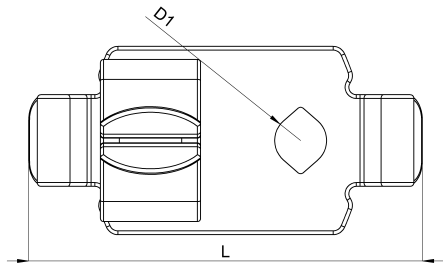
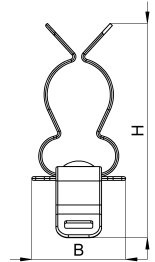


Technical data sheet

1035-235C / SKL 8/12 11-16

(Status as of 15/01/2024)



Design features

Dimensions (L / B / H) (mm)	31.5 x 15.1 x 34.3
Shield diameter min/max (mm)	11 / 16
Hole diameter D1 (mm)	4,1
Strain relief	Yes
Weight (kg)	0,005
Part	shield clamp
Material	galvanized spring steel
Mounting type	perforated plate

Order designation

Designation	Order No.	Description	PU
SKL 8/12 11-16	1035-235C	Shield clamp for perforated plate for shield diameter 11 - 16 mm, hole spacing 28mm	PU = 10 pcs.